



Baillie Gifford Worldwide Japanese Fund

28 February 2022

Investment Proposition

The Worldwide Japanese Fund is a concentrated portfolio of leading growth businesses in Japan. The Fund adopts a long-term time horizon of five years and beyond and positioning is based on bottom up stock selection. The manager adopts a pragmatic approach to growth and places significant emphasis on companies with durable competitive advantages which are run by dynamic and competent management teams.

Fund Facts

ISIN Code Class B JPY Acc	IE00BPYP3T56
Bloomberg Code Class B JPY Acc	BGWBJA ID
SEDOL Class B JPY Acc	BPYP3T5
Fund Launch Date	18 August 2014
Fund Size	¥125,041.9m
Index	TOPIX
Active Share	79%
Current Annual Turnover	14%
Current number of stocks	53
Stocks (guideline range)	35-55
Fiscal year end	30 September
Structure	Irish UCITS
Base currency	JPY

Key Decision Makers

Name	Years' Experience
Donald Farquharson*	34
Tolibjon Tursunov	11

*Partner

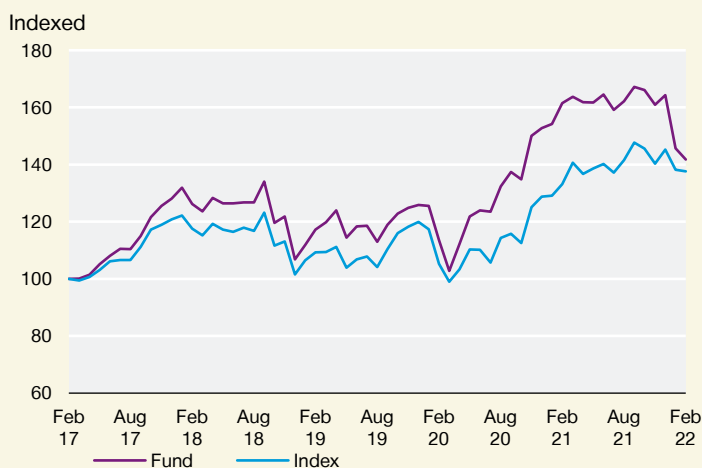
Charges

	Ongoing Charge (%)	Management Fee (%)
Class B JPY Acc	0.68	0.60

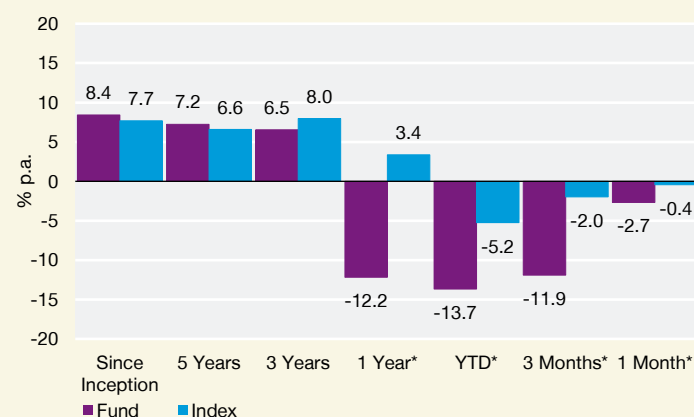
Our Worldwide funds allow us to offer multi-currency share classes. Share classes can be created on request. The ongoing charge figure is at the latest annual or interim period.

Charges will reduce the value of your investment. Costs may increase or decrease as a result of currency and exchange rate fluctuations.

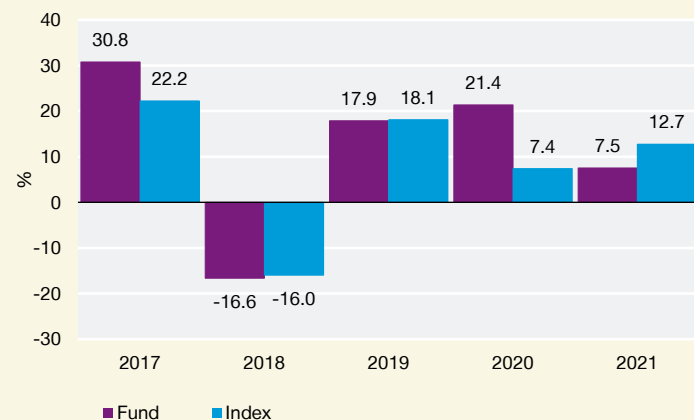
Performance



Periodic Performance

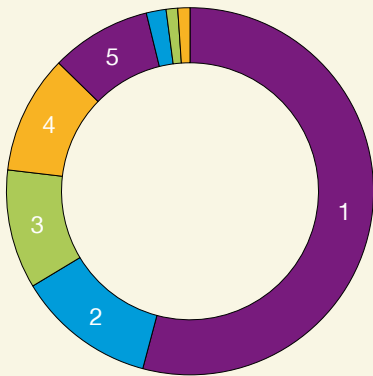


Calendar Year Performance



Source: StatPro, Tokyo Stock Exchange. As at 28 February 2022. Japanese yen. Net of fees. Class B JPY Acc, 10am prices. Index: TOPIX, calculated using close to close. *Not annualised. Share Class Inception date: 18 August 2014.

Sector Exposure



	%
1 Manufacturing	55.3
2 Services	12.5
3 Finance & Insurance	10.7
4 Transport And Communications	10.7
5 Commerce	9.0
6 Real Estate	1.8
7 Mining	1.0
8 Cash	-1.1

By investing in the Fund you own shares in the Fund. You do not have ownership or control of the underlying assets such as the stocks and shares of the companies that make up the portfolio as these are owned by the Fund.

Discrete Performance

	31/12/16- 31/12/17	31/12/17- 31/12/18	31/12/18- 31/12/19	31/12/19- 31/12/20	31/12/20- 31/12/21
Fund Net (%)	30.8	-16.6	17.9	21.4	7.5
Index (%)	22.2	-16.0	18.1	7.4	12.7

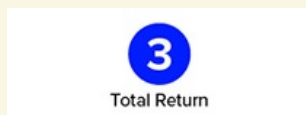
	31/12/11- 31/12/12	31/12/12- 31/12/13	31/12/13- 31/12/14	31/12/14- 31/12/15	31/12/15- 31/12/16
Fund Net (%)	N/A	N/A	N/A	7.7	4.0
Index (%)	N/A	N/A	N/A	12.1	0.3

Top Ten Holdings

	Holdings	% of Total Assets
1	Sony	5.2
2	Keyence	4.6
3	SoftBank Group	4.3
4	SBI Holdings	3.5
5	Recruit Holdings	3.5
6	Murata Manufacturing	3.3
7	Kubota	3.0
8	SMC	2.8
9	DENSO	2.8
10	Sumitomo Mitsui Trust	2.7

Awards and Ratings

As at 31 January 2022



Lipper Ratings for Total Return is supplied by Lipper, a Refinitiv Company. Copyright 2022 © Refinitiv. All rights reserved. Lipper shall not be liable for any errors or delays in the content, or for any actions taken in reliance thereto. Lipper rating based on representative shareclass.

Risks and Additional Information

The Fund is a sub-fund of Baillie Gifford Worldwide Funds PLC which is an established umbrella fund. Its Investment Manager and Distributor is Baillie Gifford Investment Management (Europe) Limited ("BGE"). This document does not provide you with all the facts that you need to make an informed decision about investing in the Fund. Further details of the risks associated with investing in the Fund can be found in the Key Investor Information Document (KIID), or the Prospectus.

A Prospectus is available for Baillie Gifford Worldwide Funds plc (the Company) in English, French and German. Key Investor Information Documents (KIIDs) are available for each share class of each of the sub-funds of the Company and in one of the official languages of each of the EU Member States into which each sub-fund has been notified for marketing under the Directive 2009/65/EC (the UCITS Directive). These can be obtained from bailliegifford.com. In addition, a summary of investor rights is available from bailliegifford.com. The summary is available in English.

The sub-funds of the Company are currently notified for marketing into a number of EU Member States under the UCITS Directive. The Company can terminate such notifications for any share class and/or sub-fund of the Company at any time using the process contained in Article 93a of the UCITS Directive.

Nothing in the document should be construed as advice and it is therefore not a recommendation to buy or sell shares.

The Fund's share price can be volatile due to movements in the prices of the underlying holdings and the basis on which the Fund is priced.

The ongoing charges figure is based on actual expenses for the latest financial period. Where the share class has been launched during the financial period and / or expenses during the period are not representative, an estimate of expenses may have been used instead. It may vary from year to year. It excludes the costs of buying and selling assets for the Fund although custodian transaction costs are included. Where a share class has not been seeded an estimate of expenses has been used.

This document contains information on investments which does not constitute independent research. Accordingly, it is not subject to the protections afforded to independent research and Baillie Gifford and its staff may have dealt in the investments concerned. It is classified as advertising in Switzerland under Art 68 of the Financial Services Act ("FinSA").

This document is issued by Baillie Gifford Overseas Limited ("BGO") which provides investment management and advisory services to non-UK clients. BGO is wholly owned by Baillie Gifford & Co. Both are authorised and regulated in the UK by the Financial Conduct Authority. BGO is registered with the SEC in the United States of America, and is licensed with the Financial Sector Conduct Authority in South Africa as a Financial Services Provider. The Fund is authorised in Ireland and regulated by the Central Bank of Ireland.

BGE provides investment management and advisory services to European (excluding UK) clients. It was incorporated in Ireland in May 2018 and is authorised by the Central Bank of Ireland. Through its MiFID passport, it has established Baillie Gifford Investment Management (Europe) Limited (Frankfurt Branch) to market its investment management and advisory services and distribute Baillie Gifford Worldwide Funds plc in Germany. Similarly, it has established Baillie Gifford Investment Management (Europe) Limited (Amsterdam Branch) to market its investment management and advisory services and distribute Baillie Gifford Worldwide Funds plc in The Netherlands. Baillie Gifford Investment Management (Europe) Limited also has a representative office in Zurich, Switzerland pursuant to Art. 58 of the Federal Act on Financial Institutions ("FinIA"). It does not constitute a branch and therefore does not have authority to commit Baillie Gifford Investment Management (Europe) Limited. It is the intention to ask for the authorisation by the Swiss Financial Market Supervisory Authority (FINMA) to maintain this representative office of a foreign asset manager of collective assets in Switzerland pursuant to the applicable transitional provisions of FinIA.

Baillie Gifford Asia (Hong Kong) Limited 柏基亞洲(香港)有限公司 ("BGA") holds a Type 1 and a Type 2 licence from the Securities and Futures Commission of Hong Kong to market and distribute Baillie Gifford's range of collective investment schemes to professional investors in Hong Kong. Baillie Gifford International LLC was formed in

Delaware in 2005 and is registered with the SEC. It is the legal entity through which BGO provides client service and marketing functions in North America.

Baillie Gifford International LLC, BGE and BGA are a wholly owned subsidiaries of Baillie Gifford Overseas Limited.

All information is sourced from Baillie Gifford & Co. All amounts in share class currency and as at the date of the document unless otherwise stated. All figures are rounded, so any totals may not sum.

Investment markets can go down as well as up and market conditions can change rapidly. The value of an investment in the Fund, and any income from it, can fall as well as rise and investors may not get back the amount invested.

The specific risks associated with the Fund include:

Custody of assets involves a risk of loss if a custodian becomes insolvent or breaches duties of care.

The Fund's exposure to a single market and currency may increase share price movements.

The Fund has exposure to a foreign currency and changes in the rate of exchange will cause the value of any investment, and income from it, to fall as well as rise and you may not get back the amount invested.

The Fund's share price can be volatile due to movements in the prices of the underlying holdings and the basis on which the Fund is priced.

Further details of the risks associated with investing in the Fund can be found in the Key Investor Information Document (KIID), or the Prospectus. Copies of both the KIID and Prospectus are available at bailliegifford.com.

Definitions

Active Share - A measure of the Fund's overlap with the benchmark. An active share of 100 indicates no overlap with the benchmark and an active share of zero indicates a portfolio that tracks the benchmark.

Awards and Ratings

The information contained herein: (1) is proprietary to Morningstar and/or its content providers; (2) may not be copied or distributed; and (3) is not warranted to be accurate, complete, or timely. Neither Morningstar nor its content providers are responsible for any damages or losses arising from any use of this information. Past performance does not predict future returns.

How to Deal

To deal please contact your representative below or alternatively you can contact Brown Brothers Harriman direct by phone or post.

Tel Dublin: +353 1 241 7156

Tel Hong Kong: +852 3971 7156

Fax Dublin: +353 1 241 7157

Fax Hong Kong: +852 3971 7157

Address:

Brown Brothers Harriman Fund Administration Services (Ireland) Limited

30 Herbert Street, Dublin 2, D02 W329, Ireland

Further information about the Fund can also be obtained from locally appointed agents, details of which are available from the country specific pages at bailliegifford.com.

Target Market

This Fund is suitable for all investors seeking a Fund that aims to deliver capital growth over a long-term investment horizon. The investor should be prepared to bear losses. This Fund is compatible for mass market distribution. This Fund may not be suitable for investors who are concerned about short-term volatility and performance, seeking a regular source of income and investing for less than five years. This Fund does not offer capital protection.

Legal Notices

The TOPIX Index Value and the TOPIX Marks are subject to the proprietary rights owned by Tokyo Stock Exchange, Inc. and Tokyo Stock Exchange, Inc. owns all rights and know-how relating to the TOPIX such as calculation, publication and use of the TOPIX Index Value and relating to the TOPIX Marks. No Product is in any way sponsored, endorsed or promoted by Tokyo Stock Exchange, Inc.

Financial Intermediaries

This document is suitable for use of financial intermediaries. Financial intermediaries are solely responsible for any further distribution and Baillie Gifford takes no responsibility for the reliance on this document by any other person who did not receive this document directly from Baillie Gifford.

Additional Geographical Location Information

Australia: Baillie Gifford Overseas Limited (ARBN 118 567 178) is registered as a foreign company under the Corporations Act 2001 (Cth) and holds Foreign Australian Financial Services Licence No 528911. This document is provided to you on the basis that you are a "wholesale client" within the meaning of section 761G of the Corporations Act 2001 (Cth) ("Corporations Act"). Please advise Baillie Gifford Overseas Limited immediately if you are not a wholesale client. In no circumstances may this document be made available to a "retail client" within the meaning of section 761G of the Corporations Act. This document contains general information only. It does not take into account any person's objectives, financial situation or needs.

Canada: BGO is not resident in Canada, its head office and principal place of business is in Edinburgh, Scotland. Baillie Gifford Overseas Limited is regulated in Canada as a portfolio manager and exempt market dealer with the Ontario Securities Commission ("OSC"). Its portfolio manager licence is currently passported into Alberta, Quebec, Saskatchewan, Manitoba and Newfoundland & Labrador whereas the exempt market dealer licence is passported across all Canadian provinces and territories. Baillie Gifford International LLC is regulated by the OSC as an exempt market and its licence is passported across all Canadian provinces and territories. Baillie Gifford Investment Management (Europe) Limited ("BGE") relies on the International Investment Fund Manager Exemption in the provinces of Ontario and Quebec.

Chile: In Chile (i) La presente oferta se acoge a la Norma de Carácter General N° 336 de la Comisión para el Mercado Financiero (CMF) de Chile.

(ii) La presente oferta versa sobre valores no inscritos en el Registro de Valores o en el Registro de Valores Extranjeros que lleva la Comisión para el Mercado Financiero, por lo que los valores sobre los cuales ésta versa, no están sujetos a su fiscalización;

(iii) Que por tratarse de valores no inscritos, no existe la obligación por parte del emisor de entregar en Chile información pública respecto de estos valores; y

(iv) Estos valores no podrán ser objeto de oferta pública mientras no sean inscritos en el Registro de Valores correspondiente.

Colombia: The securities have not been, and will not be, registered with the Colombian National Registry of Securities and Issuers (Registro Nacional de Valores y Emisores) or traded on the Colombian Stock Exchange (Bolsa de Valores de Colombia). Unless so registered, the securities may not be publicly offered in Colombia or traded on the Colombian Stock Exchange. The investor acknowledges that certain Colombian laws and regulations (including but not limited to foreign exchange and tax regulations) may apply in connection with the investment in the securities and represents that it is the sole liable party for full compliance therewith.

Denmark: The Danish Financial Supervisory Authority has received proper notification of the marketing of units or shares in the Fund to investors in Denmark in accordance with the Danish Investment Associations Act and the executive orders issued pursuant thereto.

Isle of Man: In the Isle of Man the Fund is not subject to any form of regulation or approval in the Isle of Man. This document has not been registered or approved for distribution in the Isle of Man and may only be distributed in or into the Isle of Man by a person permitted under Isle of Man law to do so and in accordance with the Isle of Man Collective Investment Schemes Act 2008 and regulations made thereunder. BGE is not regulated or licensed by the Isle of Man Financial Services Authority and does not carry on business in the Isle of Man.

Israel: This factsheet, as well as investment in the Fund described herein, is directed at and intended for Investors that fall within at least one category in each of: (1) the First Schedule of the Israeli Securities Law, 1968 ("Sophisticated Investors"); and (2) the First Schedule of the Investment Advice Law ("Qualified Clients").

Jersey: In Jersey consent under the Control of Borrowing (Jersey) Order 1958 (the "COBO Order") has not been obtained for the circulation of this document.

Peru: The Superintendencia del Mercado de Valores (SMV) does not exercise any supervision over this Fund and therefore the management of it. This document is only for the exclusive use of institutional investors in Peru and is not for public distribution.

Singapore: In Singapore the Fund is on the Monetary Authority of Singapore's List of Restricted schemes. This document has not been registered as a prospectus with the Monetary Authority of Singapore. Accordingly, this information memorandum and any other document or material in connection with the offer or sale, or invitation for subscription or purchase, of shares in the Fund may not be circulated or distributed, nor may the shares be offered or sold, or be made the subject of an invitation for subscription or purchase, whether directly or indirectly, to persons in Singapore other than (i) to an institutional investor pursuant to Section 304 of the Securities and Futures Act, Chapter 289 of Singapore (the "SFA") or (ii) otherwise pursuant to, and in accordance with the conditions of, any other applicable provision of the SFA.

South Korea: In South Korea Baillie Gifford Overseas Limited is registered with the Financial Services Commission as a cross-border foreign Discretionary Investment Manager & Non-Discretionary Investment Adviser.

Spain: In Spain BAILLIE GIFFORD WORLDWIDE FUNDS PLC is registered with the Securities Market Commission under official registration number 1707.

Switzerland: In Switzerland this document is directed only at qualified investors (the "Qualified Investors"), as defined in the Swiss Collective Investment Schemes Act of 23 June 2006, as amended ("CISA") and its implementing ordinance. The Fund is a sub-fund of Baillie Gifford Worldwide Funds PLC and is domiciled in Ireland. The Swiss representative is UBS Fund Management (Switzerland) AG, Aeschenenplatz 6, 4052 Basel. The Swiss paying agent is UBS Switzerland AG, Bahnhofstrasse 45, 8001 Zurich. The documents of the Company, such as the Partial Prospectus for Switzerland, the Articles of Association, the Key Investor Information Documents (KIIDs), and the financial reports can be obtained free of charge from the Swiss representative. For the shares of the Fund distributed to qualified investors in Switzerland, the place of jurisdiction is Basel. Each time performance data is published, it should be noted that the past performance is no indication of current or future performance, and that it does not take account of the commissions and costs incurred on the issue and redemption of shares.



Calton Square, 1 Greenside Row, Edinburgh EH1 3AN
Telephone +44 (0) 131 275 2000 bailliegifford.com

Contact

Intermediary Enquiries
 Email: funds@bailliegifford.com

Institutional Enquiries
 Email: Institutional.Enquiries@bailliegifford.com